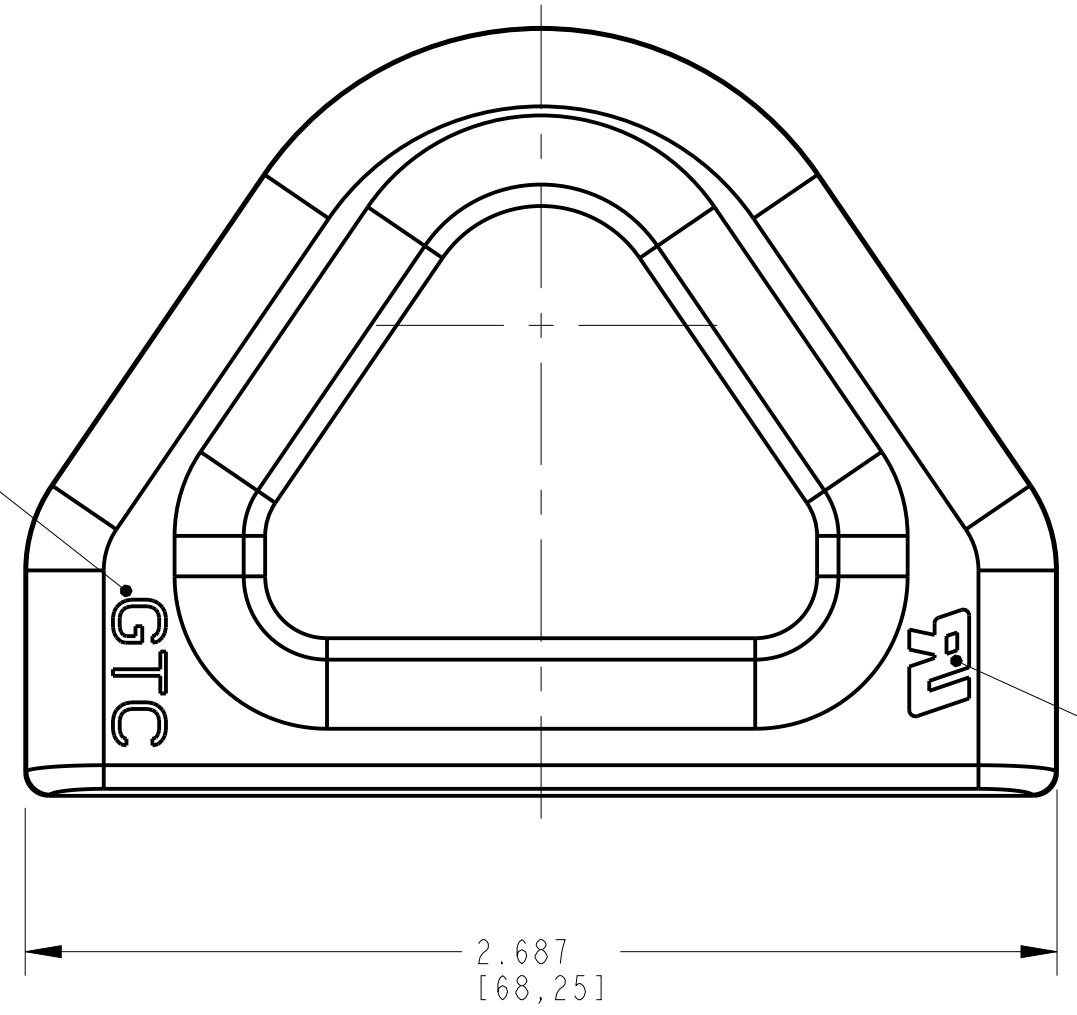
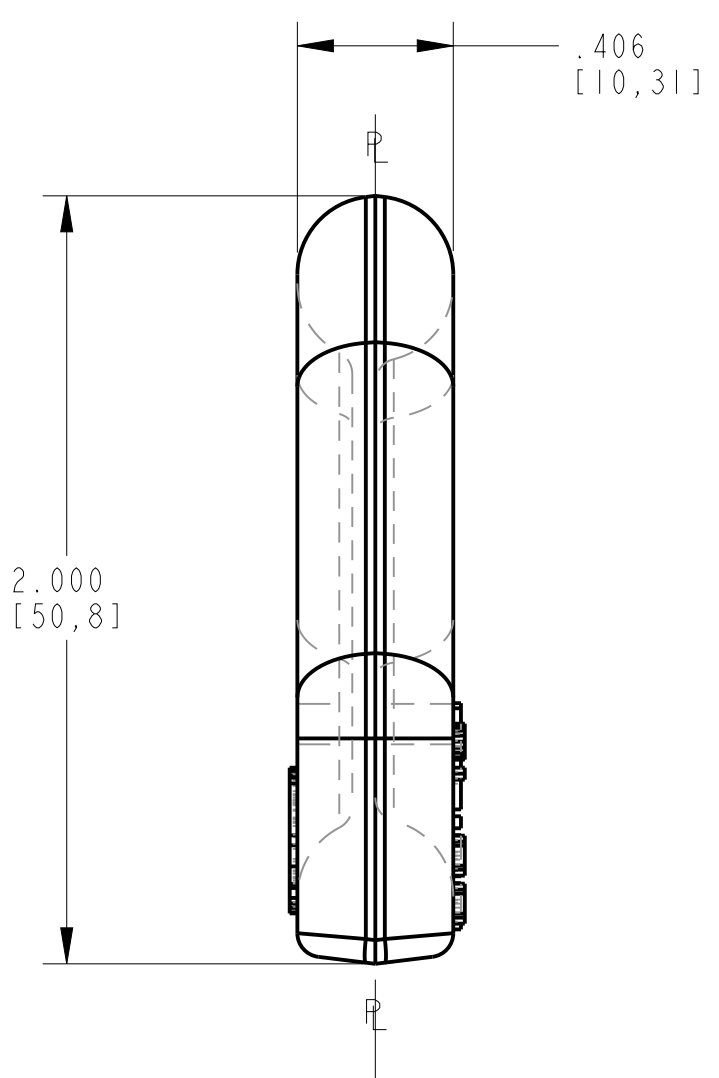


CURRENT REVISION LEVEL	
B	01-04-19 UPDATE MATERIAL RANGE TO BE 1018-1022
C	09-24-19 ADD "RU" LOGO

ENGRAVE "GTC" AS SHOWN
IN .125 [3.2] HIGH LETTERS

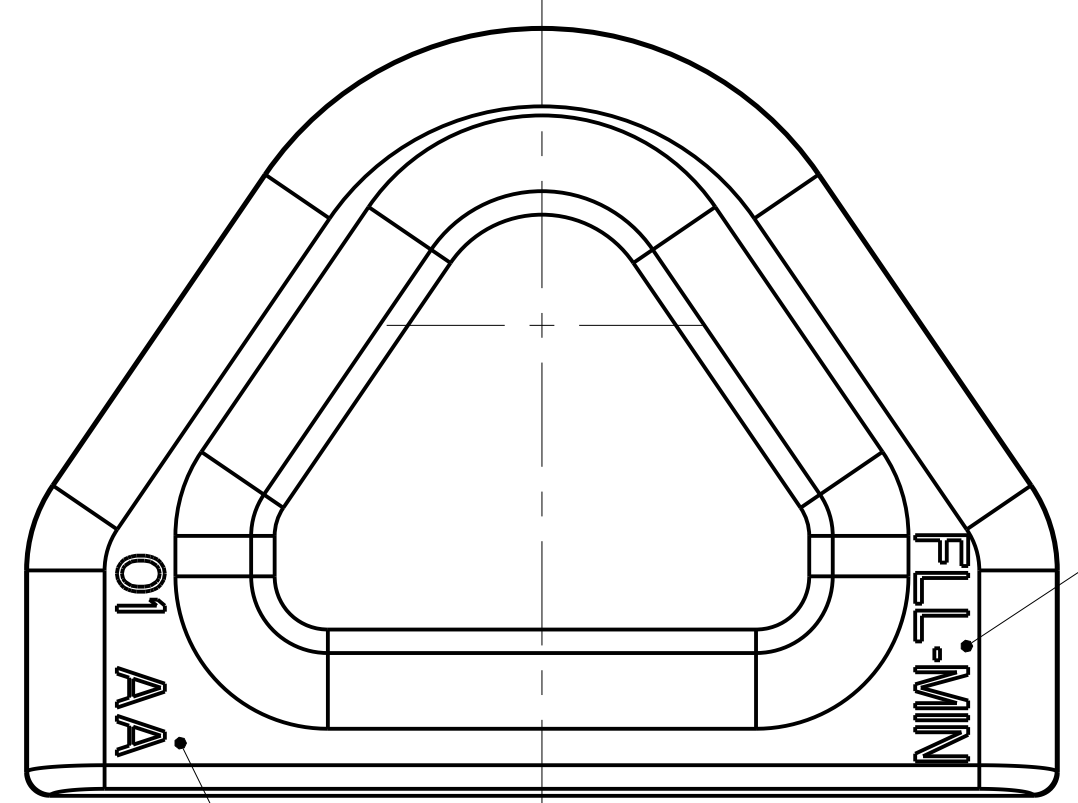


ENGRAVE RECOGNIZED
COMPONENT MARK AS SHOWN
IN .156 [4.0] HIGH LETTERS,
RAISED .020 [.5] PER UNDERWRITERS
LABORATORIES INC. FORM 200-1950



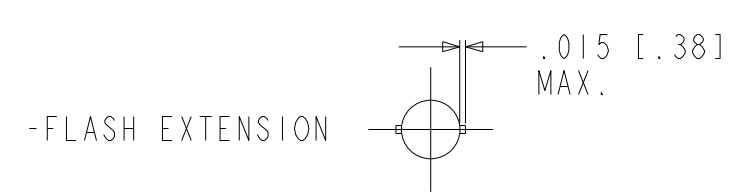
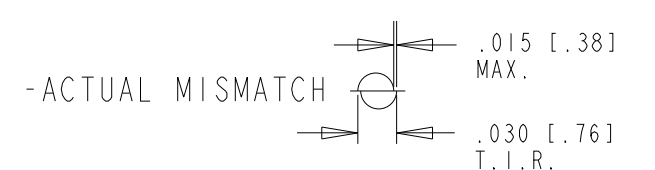
FORGE VIEWS

ENGRAVE "FLL-MIN" AS SHOWN
IN .125 [3.2] HIGH LETTERS



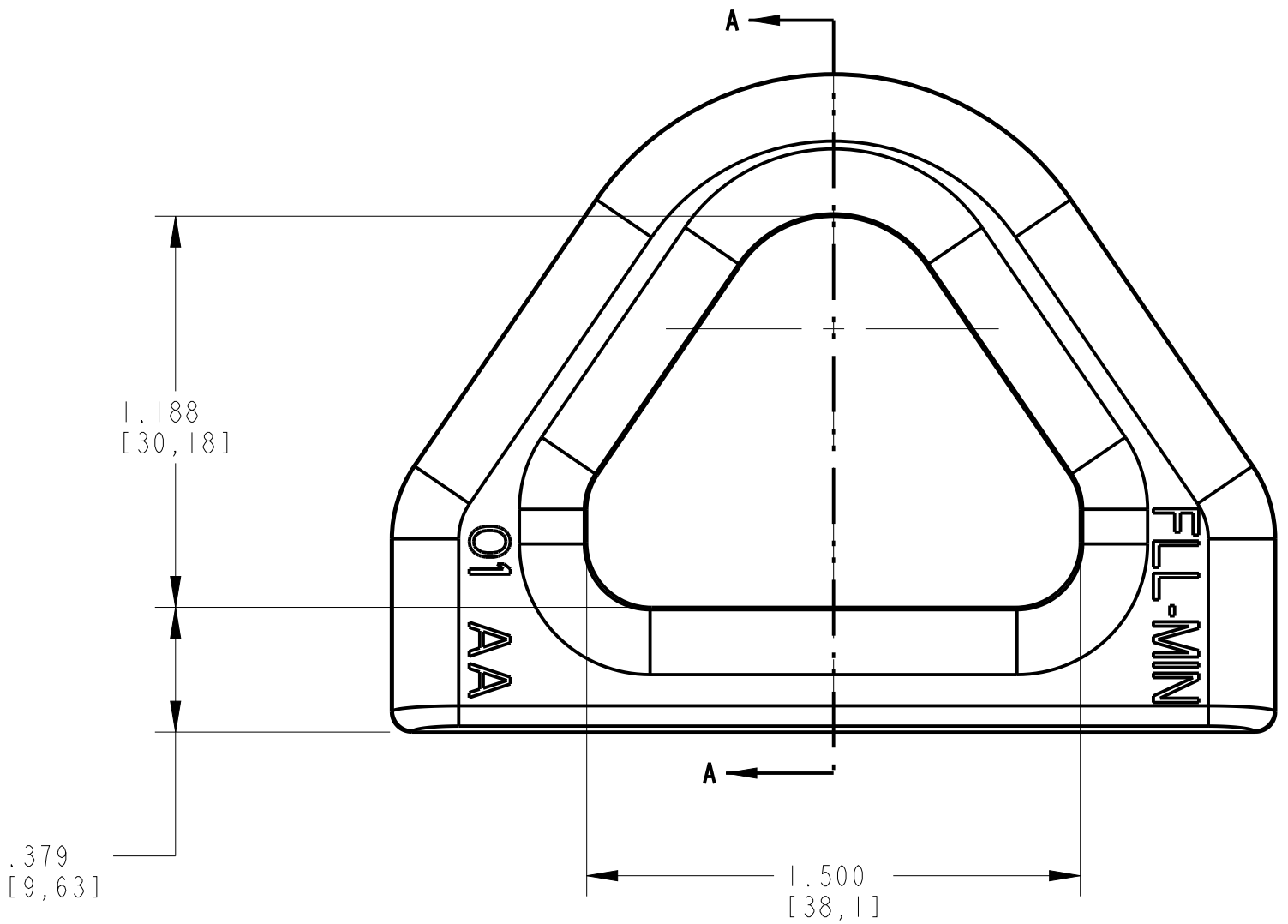
STAMP DIE IMP NO. & HEAT
CODE AS SHOWN IN .125 [3.2] HIGH
RAISED LETTERS
USE "01 & 02"

NOTES: (UNLESS OTHERWISE SPECIFIED)

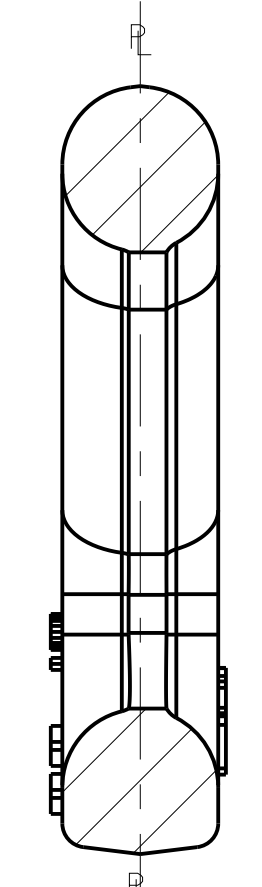


-FORGING TOLERANCES:
GENERAL TOLERANCE $\pm .030$ [.8]
DRAFT: $7^{\circ} \pm 2^{\circ}$

-MATERIAL: 1018-1022 MOD (MUST COMPLY WITH ASTM A105 CHEMICAL REQUIREMENTS,
INCLUDING S4 SUPPLEMENT FOR CARBON EQUIVALENCE)



PUNCH VIEWS



SECTION A-A

TOLERANCES: SEE NOTES	GLOBAL TANK COMPONENTS	
	PART NUMBER: FLL-MIN PART NAME: LIFTING LUG MATERIAL: SEE NOTES	
	DRAWN: 12-03-18 DRAWN BY: DWE	