

## Emergency Vents

Model 100



PART #	SIZE	UL LISTED FLOW CAPACITY AT 2.5 PSIG (CFH)
1002	2"	24,058
1003	3"	63,633
1004	4"	125,343
1005	5"	195,347
1006	6"	284,968
1008	8"	541,014
10010*	10"	807,803

\*Non UL

- Improved design with increased airflow
- Spring loaded – pressure relief set at .5 PSI, full open by 2.5 PSI
- Buna-N-Gasket provides a vapor-tight seal
- Black painted steel construction – custom colors available
- Private labeling available
- NPT connections standard – all thread type connections available
- Male NPT: 2", 3", 4", 5", 6", 8"
- Female NPT: 3", 4", 5", 6", 8"

*Warning: Emergency Vents are designed for "Emergency Venting" and must be used in conjunction with other venting devices. Emergency vents must be sized per UL requirements.*

Global Tank Components Emergency Vents comply with UL Codes UL-2583, UL-142, UL-2085, UL-2244.

3765 Creamery Road, Bldg. 96 #5, DePere, WI 54115

Phone: 920.264.8457 • Fax: 847.239.7776

Email: [sales@globaltankcomponents.net](mailto:sales@globaltankcomponents.net)

[www.globaltankcomponents.net](http://www.globaltankcomponents.net)



## Mushroom Vents



- Mushroom-style atmospheric vent
- Made of cast iron with a 40 mesh screen
- Zinc plated
- NPT threads are standard
- 1¼", 1½" 2", 4"

## Fill Caps



- Locking design
- Made of cast iron
- Zinc plated
- Male NPT: 2"
- Female NPT: 2", 4"

PART #	SIZE	THREADS
GFCM-2	2"	Male NPT
GFCF-2	2"	Female NPT
GFCF-4	4"	Female NPT

## Tank Flanges



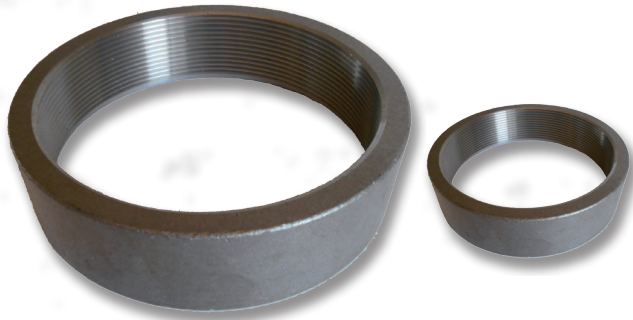
- NPT threads
- ASME SA105
- Flat type
- Flat type with pilot
- Extra-heavy flat type

Flat Type	
SERIES STANDARD	PIPE SIZE
BFTF-3/8	3/8"
BFTF-1/2	1/2"
BFTF-3/4	3/4"
BFTF-1	1"
BFTF-1¼	1¼"
BFTF-1½	1½"
BFTF-2	2"
BFTF-3	3"
BFTF-4	4"

Flat Type w/Pilot	
SERIES STANDARD	PIPE SIZE
BFTFWP-3/8	3/8"
BFTFWP-1/2	1/2"
BFTFWP-3/4	3/4"
BFTFWP-1	1"
BFTFWP-1¼	1¼"
BFTFWP-1½	1½"
BFTFWP-2	2"
BFTFWP-3	3"
BFTFWP-4	4"

Extra-heavy Flat Type	
SERIES STANDARD	PIPE SIZE
BFHTF-5	5"
BFHTF-6	6"

## Half & Full Couplings



- Merchant steel
- Conform to ASTM A865, ASME B16.11, ASME B1.20.1
- Half Coupling sizes available: 1/8" – 8" (2 1/2" – 8" taper tapped)
- Full Coupling sizes available: 1/8" – 8" (2 1/2" – 8" taper tapped)

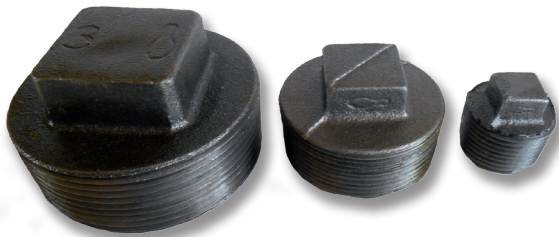
## Double Tapped Bushings



- Cast iron construction
- NPT threads
- Other sizes available upon request

PART #	MALE	FEMALE	HEX	PART #	MALE	FEMALE	HEX
BDTB-1x1/2	1"	1/2"	Outside	BDTB-2x1/2	2"	1/2"	Inside
BDTB-1 1/2x1/2	1 1/2"	1/2"	Inside	BDTB-2x3/4	2"	3/4"	Inside
BDTB-1 1/2x3/4	1 1/2"	3/4"	Inside	BDTB-2x1	2"	1"	Inside
BDTB-1 1/2x1	1 1/2"	1"	Outside	BDTB-2x1 1/2	2"	1 1/2"	Outside
BDTB-2x3/8	2"	3/8"	Inside	BDTB-4x2	4"	2"	Inside

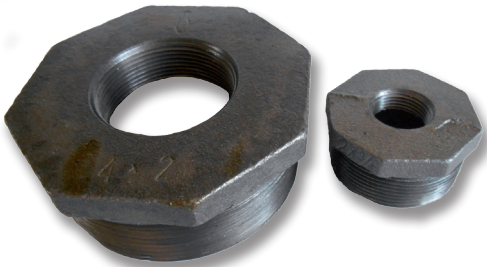
## Threaded Plugs



- Malleable iron
- Cored design
- Sizes available: 1/2" – 6"

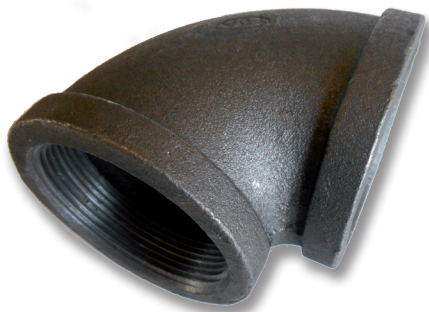
PART #	MALE NPT
BP-1/2	1/2"
BP-3/4	3/4"
BP-1 1/4	1 1/4"
BP-1 1/2	1 1/2"
BP-2	2"
BP-2 1/2	2 1/2"

## Threaded Bushings



- Malleable iron
- Hex head design
- Dimensions conform to ASME B16.3
- Material conforms to ASTM A197
- Threads conform to ASME B1.20.1

## Threaded 90s



- Malleable iron
- Sizes available: ½" – 6"
- Dimensions conform to ASME B16.3
- Material conforms to ASTM A197
- Threads conform to ASME B1.20.1

## Carbon Steel Pipe Nipples



- Schedule 40 welded carbon steel pipe nipples
- ½" – 8" diameter pipe nipples
- Specializing in custom lengths
- Black steel pipe used conforms to ASTM A53
- Welded steel nipples conform to ASTM A733
- NPT threads on nipples conform to ASME B1.20.1